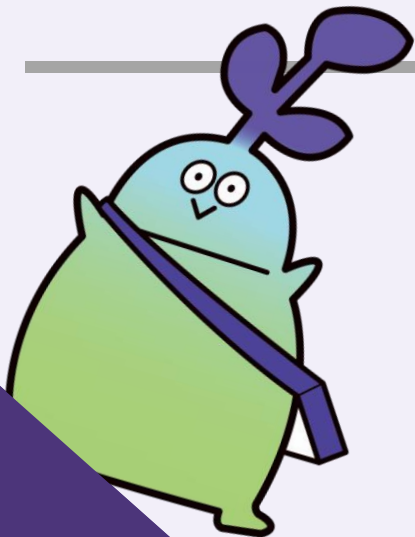


International Engineering Intern 2025 in York “Introduction to Tohoku University”



Tohoku Univ. Engineering Department

Hiroto Taniuchi, Naru Todo, Harurku Shirai

Masahiro Yamaguchi, Momoka Kato,

Kotaro Tanemura, Masato Wada

Tatsuya Suetomo, Kei, Fujihira, Kento Masuda

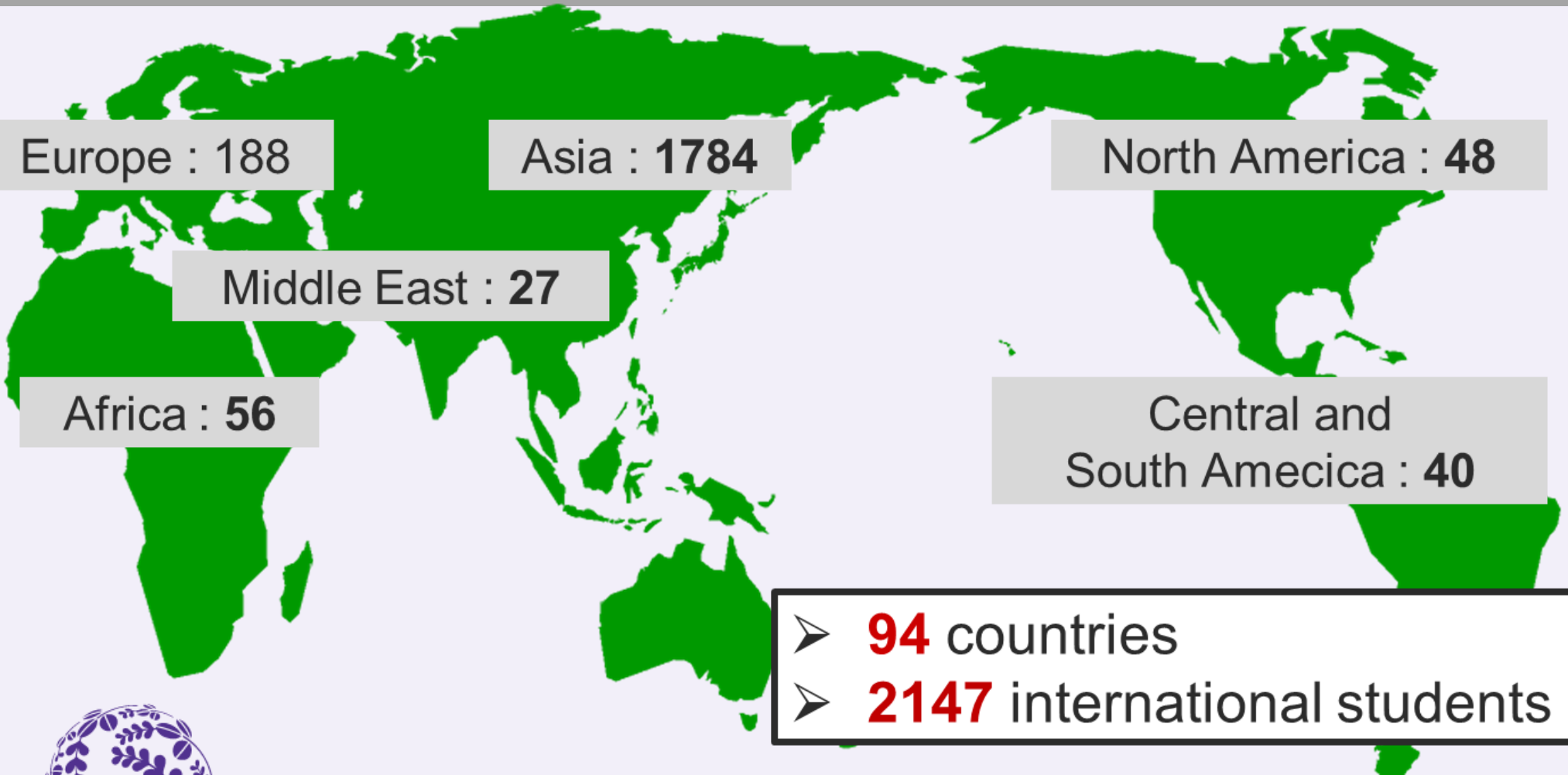
Contents

1. Internationality
2. Research Capability
3. Comfortable environment
4. Student Activities, Daily Life
5. At The End

1. Internationality

- 1.1. The Number of International Students**
- 1.2. Support Plan for International Students**
- 1.3. Exchange Student Interaction Club**

1.1. The Number of International Students



No.2 Ratio of international students **11.6%**

1.2.Support Plan for International Students



Arrangements for travel



Various procedures at City Hall



Finding a property to rent



Support Interviews

Exchange Student Interaction Club

International student organization

IPLANET

AFAM

TUFSA

PPIS

TUIDSO

Ohanami



Imoni



1.4. Summary of Internationality

Why

International students choose U.Tohoku?

Point

- The Philosophy "**Open Door**"
- Many tolerant societies, club and circle
- Rich support and facilities
- Diverse and highly specialized courses

So

U.Tohoku became **No.1** National-University



2. Research Capability

- 2.1. Policy and Philosophy
- 2.2. University for International Research Excellence
- 2.3. Famous Scientists
- 2.4. Flagship Facility

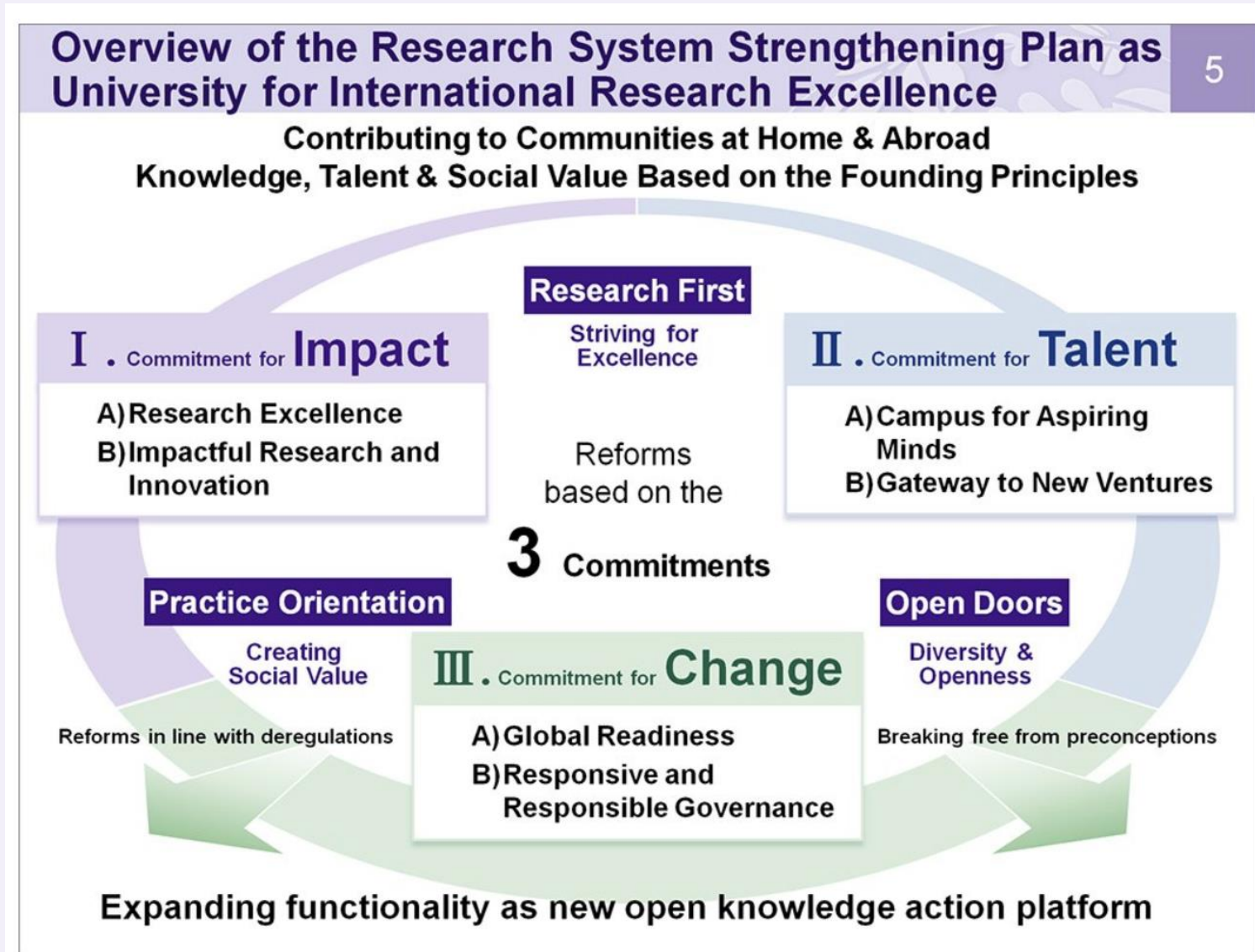
2.1. Policy and Philosophy

- Research First
- Practice-oriented Research and Education
- Open-door

Mission

- ① Cultivating Leadership Talent
- ② Research-centered University
- ③ World-leading University

2.2. University for International Research Excellence



2.3. Famous Scientists



TOHOKU
UNIVERSITY



共同通信社

2.4. Flagship Facility



Nano Terasu

3. Comfortable Environment



- 3.1. Central City, Sendai
- 3.2. Large Campus

3.1. North-East Central City, Sendai

- Sendai City, Miyagi, is the central city of the Tohoku region.
- It is easily accessible by air, bullet train, subway, ferry, and bus!
- It takes only 1.5 hour to Tokyo and 1.3 hour to Sapporo



3.1. North-East Central City, Sendai

- Sendai is a city in harmony with nature, surrounded by oceans, mountains, and rivers. In Japanese, we call it “**杜の都**”, which means **City of Trees**.



3.1. North-East Central City, Sendai

- Of course, there are plenty of fun commercial facilities, shopping streets, and places for young people to play!



3.2. Large campus

4 large campuses in
Aobayama, Seiryō, Kawauchi and Katahira.

Kawauchi



Seiryō



Aobayama



Katahira



3.3. Comfortable Environment

Library



1,300,000 books!

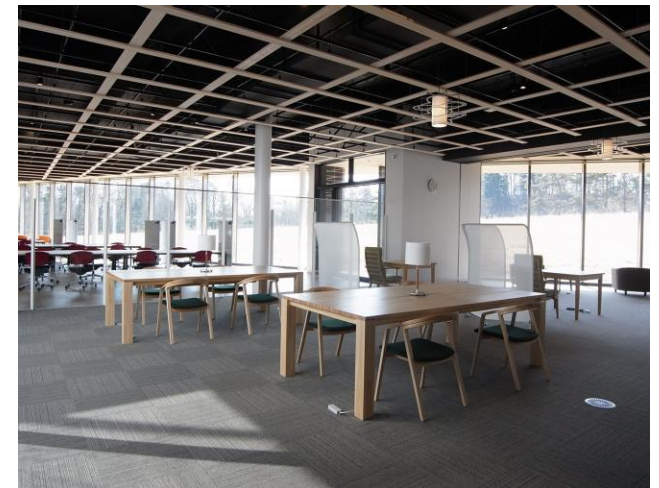


Student Cafeteria



Homemade Curry 😊

Large Lounge



4. Student Activities

- 4.1 club activity
- 4.2 seasonal event

4.1 Club activity

194 clubs

As of March 2024

87 sports clubs
104 culture clubs
3 news clubs



4.1 Club activity



Windnauts

4.1 Club activity

The Annual Seven National Universities Athletic Meet



4.1 Club activity

- can improve athletic skills!
- can participate in many competitions in Japan!
- can learn Japanese and Japanese culture!
- can go out for many places with teammates!

4.2 Many seasonal events



**University
Festival**

Imoni



**Sendai Pageant
Of Starlight**



Fin.

Thank you for your attention!

Please visit our campus as tourist or student or researcher!

We hope to see you in Sendai!

[More Info](#)

